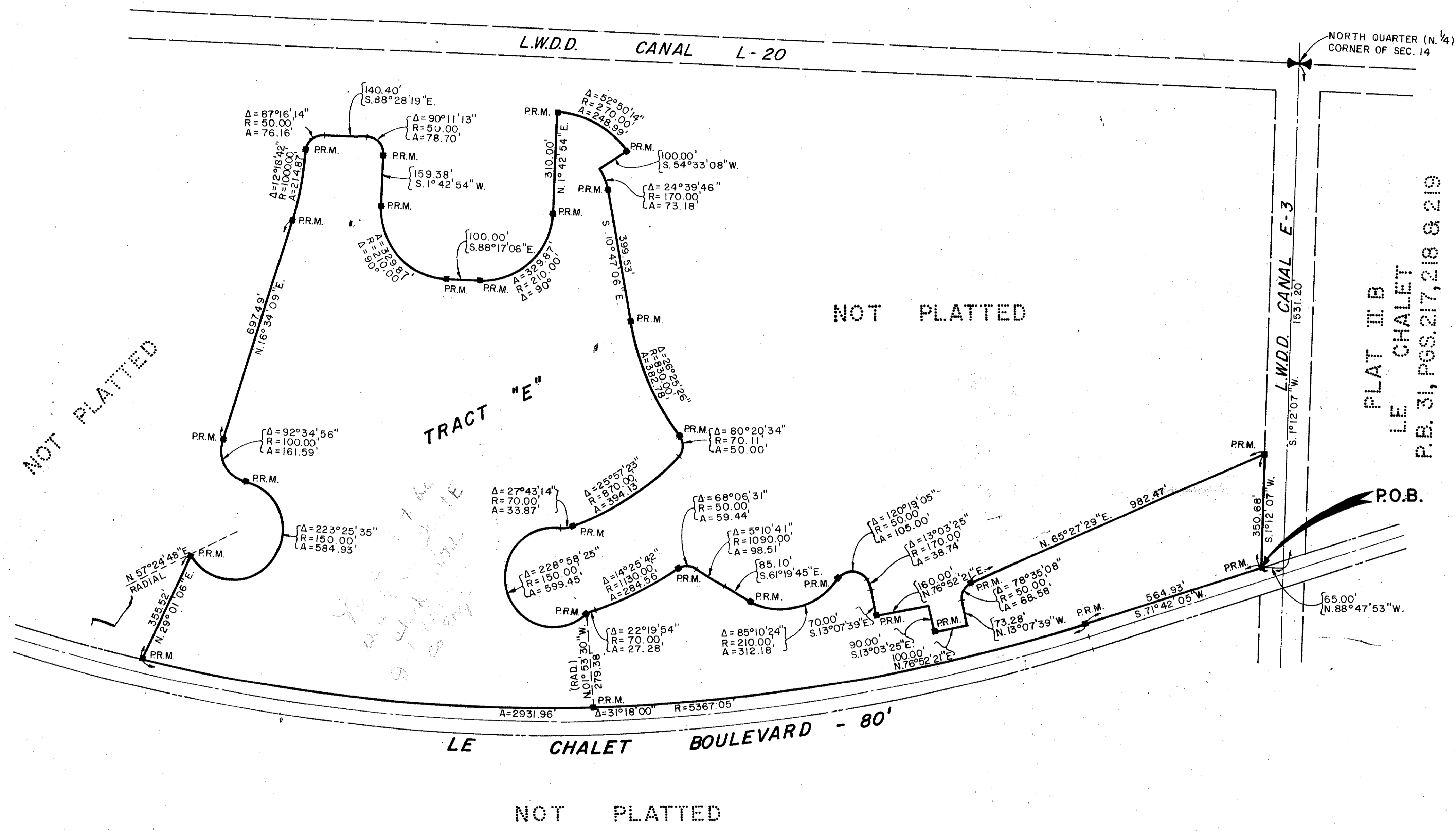


# PLAT NO. IV-B LE CHALET (P.U.D.)

IN SECTIONS 14 & 15, TOWNSHIP 45 SOUTH, RANGE 42 EAST  
PALM BEACH COUNTY, FLORIDA  
IN 6 SHEETS SHEET NO. 6

62

STATE OF FLORIDA }  
COUNTY OF PALM BEACH } ss  
This Plat was filed for record at \_\_\_\_\_ M.  
this \_\_\_\_\_ day of \_\_\_\_\_  
19 \_\_\_\_\_, and duly recorded in Plat Book No. \_\_\_\_\_  
on page \_\_\_\_\_  
JOHN B. DUNKLE, Clerk Circuit Court  
By \_\_\_\_\_, D.C.  
**FLOOD ZONE "B"**



NOT PLATTED

TRACT "E"

NOT PLATTED

PLAT II B  
LE CHALET  
P.B. 31, PGS. 217, 218 & 219

LE CHALET BOULEVARD - 80'

NOT PLATTED

TURNOUT REQUIRED

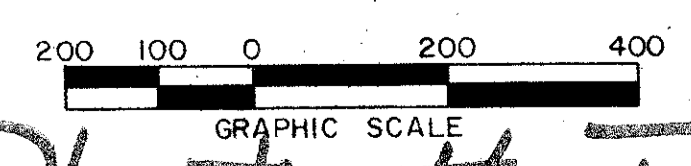
0270-307

14 & 15 / 45 / 42

34

37/62

Le Chalet Plat. # IV - Pud



THIS INSTRUMENT WAS PREPARED BY  
R.L. SHEPHARD IN THE OFFICE OF

<b>ROSSI AND MALAVASI</b> ENGINEERS, INC. WEST PALM BEACH, FLORIDA		<b>PLAT NO. IV-B</b> <b>LE CHALET (P.U.D.)</b> IN 6 SHEETS SHEET NO. 6	
Date	FEBRUARY, 1979	Designed	Scale 1" = 200'
Drawn	P. STEVISON	Job No.	
Approved		File No.	6 of 6